

# TONGVEO IP Search Tool User Guide

## 01 Function Overview

**IP Search:** Automatically scans all Tongveo devices on the current local network and lists their IP address, MAC address (physical address), gateway, and other information.

**Modify IP:** Allows users to assign a new static IP address to the detected devices.

**Access Web:** Quickly open the device's web management interface in the default browser.

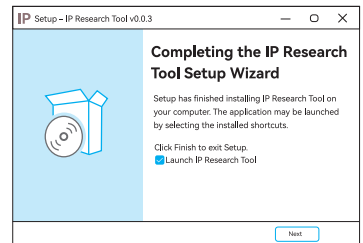
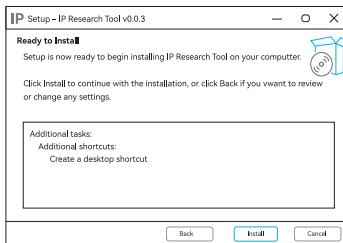
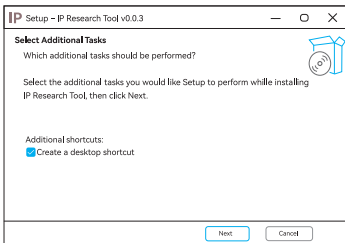
(Note: The IP Search Tool only supports Tongveo device with firmware version V1.2.02 or above.)

## 02 Installation Steps

1、Download the IP Search Tool installer from: <https://tongveo.net/support/download/> or by scanning the QR code below.

2、Double-click the installer and follow the prompts: Next → Install → Finish.

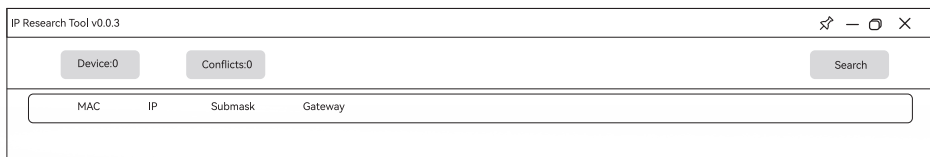
The installation takes about 2 seconds.



3、After installation, a shortcut icon will appear on the desktop.

## 03 Detailed Operation Steps

**Step 1: Connect your computer to the network and double-click to run the Tenveo IP Search Tool. The homepage appears as follows:**



### Step 2: Search for Devices

Please make sure tongveo device is connected to Internet. Click [Search] on the main interface.

The list will refresh and display all detected tongveo devices (cross-subnet search supported).

**Device:** Total number of detected tongveo devices

**Conflicts:** Number of devices with IP conflicts

The device list includes the following information:

IP Address – Current IP address of the device (e.g., 192.168.0.206)

MAC Address – Unique physical address of the device

Subnet Mask – Subnet mask value

Gateway – Gateway address

IP Research Tool v0.0.3					
Device:2		Conflicts:0		Search	
MAC	IP	Submask	Gateway		
3c:b4:3d:00:22:49	192.168.0.59	255.255.255.0	192.168.0.1	Modify	Access Web
3c:b4:3d:00:22:50	192.168.3.59	255.255.255.0	192.168.3.1	Modify	Access Web

### Step 3: Modify Device IP Address

Ensure the device IP is in the same subnet as your computer to access the device web page.

First, confirm your computer’s IP subnet under Network & Internet Settings.

Then, select a device from the list, click [Modify], and update the device’s IP address and gateway so they match your computer’s subnet.

Example: If your computer IP is 192.168.0.30, set the device IP to 192.168.0.XXX (where XXX is a number between 2–254 not already in use).

After setting the new IP, click [Confirm]. The device will reboot and apply the new IP configuration. The updated IP will then appear in the list.

Properties

Link speed (Receive/Transmit):

1000/1000 (Mbps)

Link-local IPv4 address:

IPv4 address:

192.168.1.130

IPv4 DNS servers:

192.168.1.1

Primary DNS suffix:

lan

Manufacturer:

Realtek

Description:

Realtek PCIe GbE Family Controller

Driver version:

9.1.410.2015

Physical address (MAC):

Copy

MAC Address

3c:b4:3d:00:2c:04

IP Address

192.168.5.17

Subnet Mask

255.255.255.0

Default Gateway

192.168.5.1

Cancel

Confirm

Before

MAC Address

3c:b4:3d:00:2c:04

IP Address

192.168.0.17

Subnet Mask

255.255.255.0

Default Gateway

192.168.0.1

Cancel

Confirm

After

### Step 4: Access the Device Web Interface

Select the device with the modified IP.

Click [Access Web].

Your default browser (e.g., Chrome, Edge) will automatically open the device’s login page.

Enter the device username and password to access advanced settings such as live video, recording, and image adjustments.

尺寸：160x205mm\_280克名片纸\_双面4c\_过哑膜